

Key Questions:

What is Geography ?

What are maps used for ?

Where is the evidence that things have changed?

Why do people make changes to places ?

What different types of maps can you think of ?

Year 1 Autumn Term

Geography

Once Upon A Time

Has my school always looked like this?



Key concepts:

Environment - understanding my school location and its changes.

Scale - understanding the size of my school compared to other places.

Processes - Looking for reasons why change has taken place.



Key skills:

I can use simple compass directions

I can use aerial photographs

I can look closely at changes

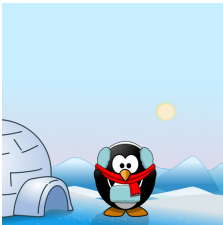
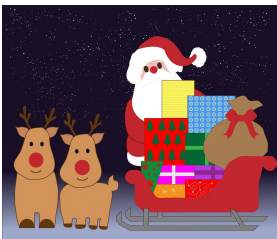
I can follow directions

I can make observations about where things are

Key words:

North, South, East, West, near, far, left, right, North pole and South pole, human, physical, factory, office, seasons, autumn, winter, spring, summer.

Place:



Find out where Father Christmas has to travel.

Key facts:

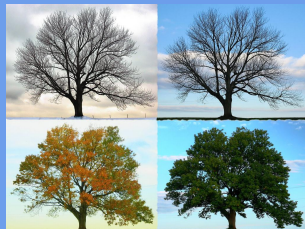
- Some changes take place because humans make the changes and some changes take place because of physical processes.
- Maps and photographs help us to see some of these changes.

Fieldwork:

You will be using a map to explore the school grounds and then draw a picture map of an imaginary place with symbols. You will be drawing around objects to make a plan.



You will be looking at the changing seasons. Please discuss this image with an adult:



Try at home:

Try searching different places on the Google Earth website. Can you find your school and your house? What do you notice when you are looking?

Just before Christmas, go onto this website and look at Santa's route to reach your house:

<https://www.noradsanta.org/>

What I would like to know:



Share your thoughts with your teacher and parent.

| | | |
|--|--|--|
| | | |
|--|--|--|